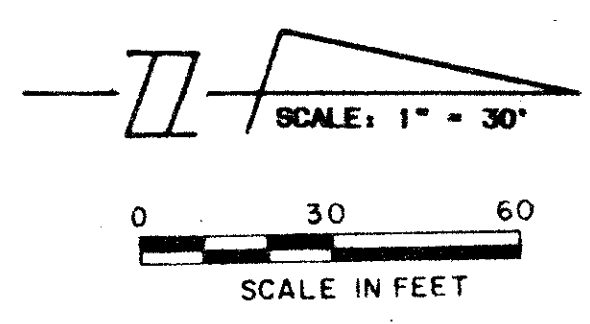
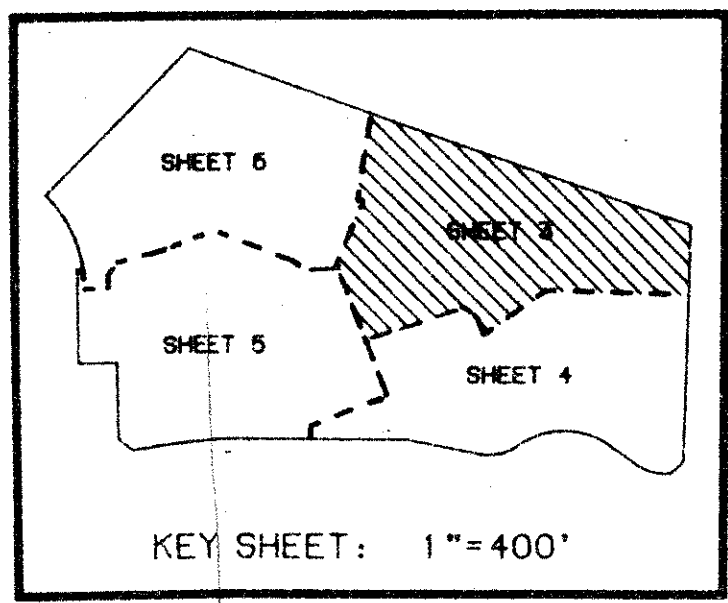
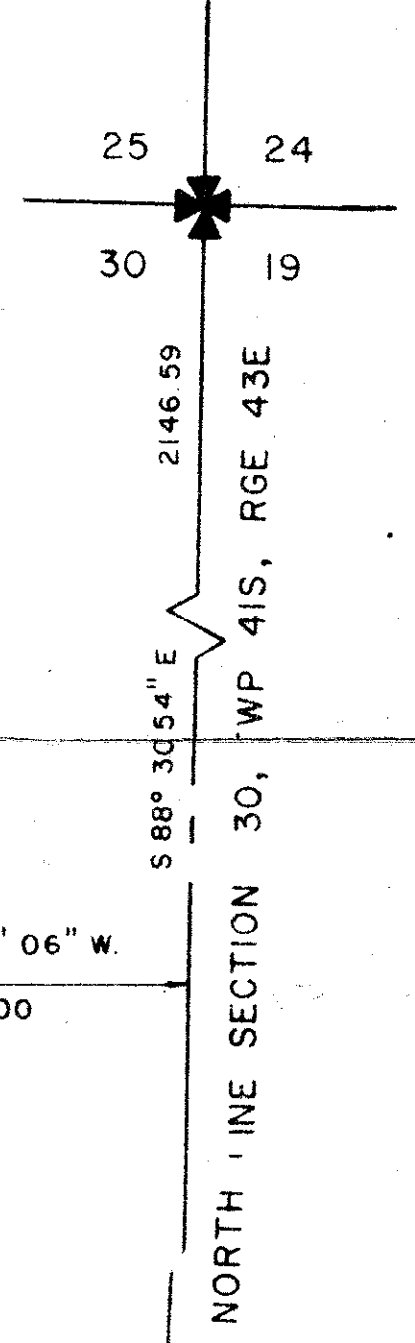
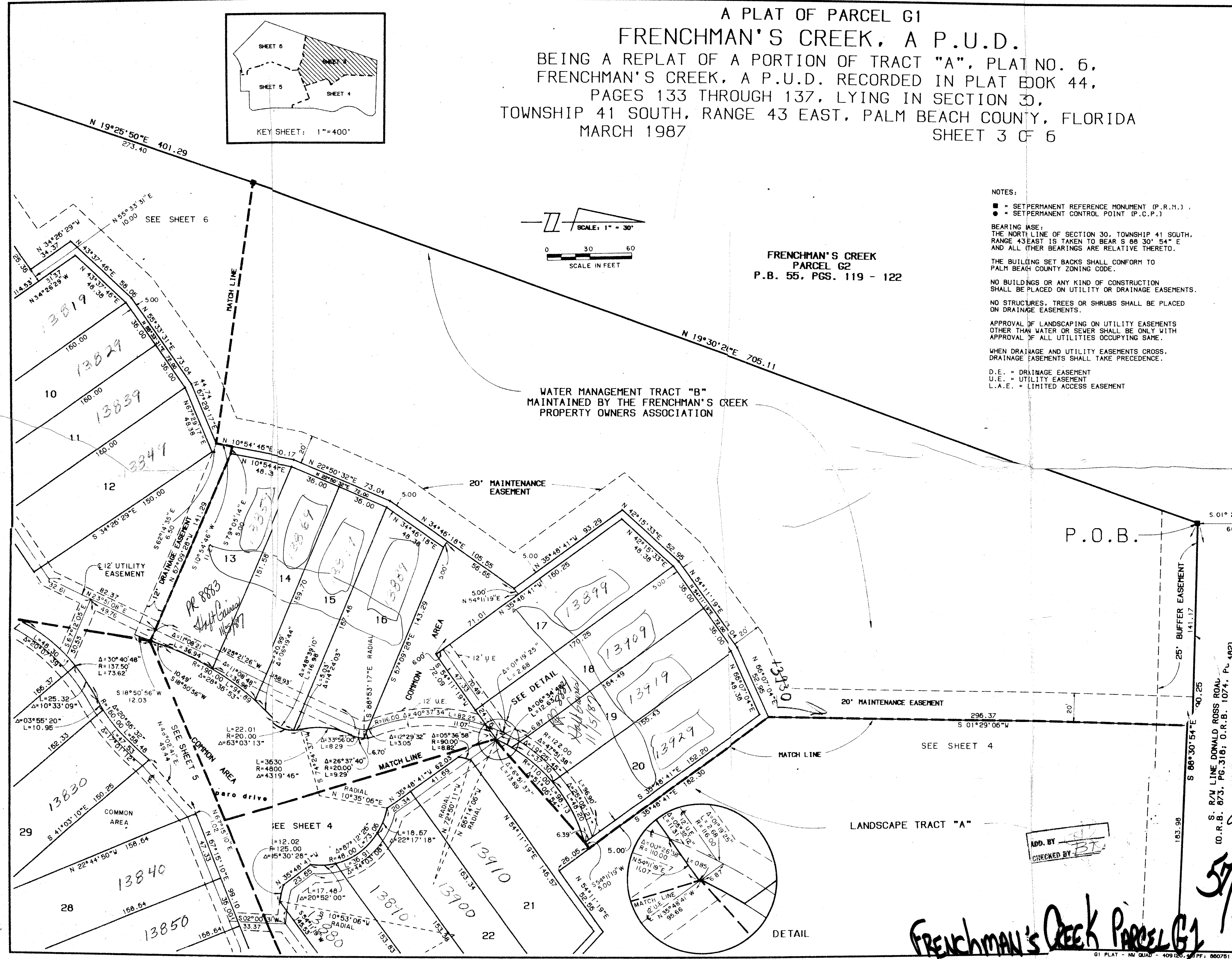


A PLAT OF PARCEL G1
 FRENCHMAN'S CREEK, A P.U.D.
 BEING A REPLAT OF A PORTION OF TRACT "A", PLAT NO. 6,
 FRENCHMAN'S CREEK, A P.U.D. RECORDED IN PLAT BOOK 44,
 PAGES 133 THROUGH 137, LYING IN SECTION 30,
 TOWNSHIP 41 SOUTH, RANGE 43 EAST, PALM BEACH COUNTY, FLORIDA
 MARCH 1987



FRENCHMAN'S CREEK
 PARCEL G2
 P.B. 55, PGS. 119 - 122

NOTES:
 ■ = SET PERMANENT REFERENCE MONUMENT (P.R.M.)
 ● = SET PERMANENT CONTROL POINT (P.C.P.)
 BEARING BASE:
 THE NORTH LINE OF SECTION 30, TOWNSHIP 41 SOUTH,
 RANGE 43 EAST IS TAKEN TO BEAR S 88° 30' 54" E
 AND ALL OTHER BEARINGS ARE RELATIVE THERETO.
 THE BUILDING SET BACKS SHALL CONFORM TO
 PALM BEACH COUNTY ZONING CODE.
 NO BUILDINGS OR ANY KIND OF CONSTRUCTION
 SHALL BE PLACED ON UTILITY OR DRAINAGE EASEMENTS.
 NO STRUCTURES, TREES OR SHRUBS SHALL BE PLACED
 ON DRAINAGE EASEMENTS.
 APPROVAL OF LANDSCAPING ON UTILITY EASEMENTS
 OTHER THAN WATER OR SEWER SHALL BE ONLY WITH
 APPROVAL OF ALL UTILITIES OCCUPYING SAME.
 WHEN DRAINAGE AND UTILITY EASEMENTS CROSS,
 DRAINAGE EASEMENTS SHALL TAKE PRECEDENCE.
 D.E. = DRAINAGE EASEMENT
 U.E. = UTILITY EASEMENT
 L.A.E. = LIMITED ACCESS EASEMENT



Frenchman's Creek
 57/68
 119B
 33410
 MAKE P48
 TAZ 48

ADD. BY *BT*
 CHECKED BY *BT*

Frenchman's Creek Parcel G1
 57/68

LINDAHL, BROWNING, FERRARI & HELLSTROM, INC. CONSULTING ENGINEERS, PLANNERS & SURVEYORS 177 SOUTH REGGUS STREET SUITE 400 FORT PIERCE, FLORIDA 34940	DATE: 03/19/87 SCALE: 1" = 30'
--	-----------------------------------